



Sample 564-032723-165

T2.2 THCA Hemp Flower

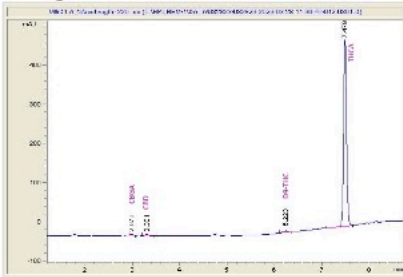
Sample Submitted: 03-27-2023; Report Date: 03-31-2023

Gelatti [Greenhouse]

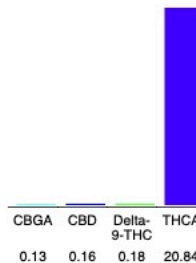
## T2.2 THCA Hemp Flower

Plant Material: Flower

### Chromatogram



### Cannabinoid Profile



### Cannabinoid Profile by HPLC

0.18%

Delta-9-THC

0.16%

CBD

21.31%

Total Cannabinoids

Cannabinoid	% wt	mg/g
CBGA	0.13	1.3
CBD	0.16	1.6
Delta-9-THC	0.18	1.8
THCA	20.84	208.4
<b>Total Cannabinoids</b>	<b>21.31</b>	<b>213.1</b>
<b>Calculated Delta-9-THC Yield</b>	<b>18.46</b>	<b>184.57</b>
<b>Calculated CBD Yield</b>	<b>0.16</b>	<b>1.60</b>
Calculated Maximum Delta-9-THC Yield = Delta-9-THC + 0.877 * THCA		
Calculated Maximum CBD Yield = CBD + 0.877 * CBDA		

Marin Analytics, LLC

250 Bel Marin Keys Blvd, Suite D4  
Novato, CA 94949

415-936-6477 / sarabiancalana1@gmail.com

Sara Biancalana  
Chief Scientist

This sample has been tested by Marin Analytics, LLC using valid testing methodologies and a quality system. Values reported relate only to the sample tested. Marin Analytics, LLC makes no claims as to the efficacy, safety or other risks associated with any detected or non-detected levels of any compounds reported herein. This Certificate shall not be reproduced except in full, without the written approval of Marin Analytics, LLC. Copyright 2022 Marin Analytics, LLC All Rights Reserved.